



ANNUAL REPORT 2016

SAFE SHELTER OF ST VRAIN VALLEY
SERVING ALL VICTIMS OF DOMESTIC VIOLENCE

BOARD OF DIRECTORS

CHRIS MCVEY

*Longmont Branch President
High Planins Bank
Board President*

JP BUTLER

*Consultant, CGI Group, INC.
Board Vice President*

MEIGHAN KERR

*CFO
Colorado Materials, INC.
Board Treasurer*

KATHY ROBERTSON

*Founder, Abby's Voice
Board Secretary*

DAVID BITLER

*Executive Director,
The Inn Between
Board Member*

SANDIE CAMPANELLA

*Detective, DV Unit
Longmont Police Dept
Board Member*

TABLE OF CONTENTS

Pg 3.....2016 Spotlight

Pg 6.....Community Impact

Pg 8.....2016 Financials

Pg 9.....Get Involved

Pg 10... Financial Contributors

SAFE SHELTER STAFF

JACKIE LIST

Executive Director

JOANN GROSSWEILER

Shelter Program Manager

JANE KLOSTREICH

Business Manager

NAOMI HARRIS

Development Director

JENNY SHAW

Shelter Manager

CHASE MOSQUEDA

Legal Advocate

JENN DOE

Outreach Coordinator

WENDY MERRIAM

Child and Youth Advocate

TIFFANY COOLEY

Weekend Relief

SURRAE COLEMAN

Weekend Relief

LINA OLINGER

Bilingual Outreach Advocate

LYNN RUSSEL

Victim's Advocate

BRYN MURPHY

Child and Youth Advocate

ARIA RATTAN

Child and Youth Advocate

RHONDA CRANE

Shelter Night Manager

ANDREA FAUDEL

Weekend Manager/relief

LINDA GUNDERSON

Shelter Facilities Manager

HOLLI SUTTON

Weekend relief

PATRICIA THOMPSON

Shelter Night Manager

SAFE HOMES, HEALTHY COMMUNITIES



Dear Friends and Allies,

Thousands of individuals and families in crisis reach out to Safe Shelter each year for support in dealing with or recovering from abusive relationships. In 2016, a year of divisions and heightened stress for many community members, we have remained committed to our values of providing a safe space and services for individuals and families regardless of gender identity, sexual orientation, socioeconomic status, language, country of origin or citizenship status.

In 2016, our Safe Shelter Symposium on Domestic Violence focused on the Power of Technology. The tech safety event was in step with the emerging concerns of parents, educational institutions and law enforcement, as well as with abusers' strategies that increasingly rely on cyber tactics. The array of breakouts and presentations offered studies, strategies and awareness-raising to parents; teens, and multidisciplinary professionals in the fields of education, child protection, therapy, research, law, law enforcement and program design and development.

The year saw an expansion of our ambitious initiative to mobilize men and boys in the work to end relationship abuse and to effect change of a male culture of violence. We officially launched Safe Shelter's White Ribbon Campaign, the world's largest male-led campaign to end DV, at our Legacy Dinner. To target young men, we introduced into the St. Vrain Valley Schools Coaching Boys Into Men, an evidenced-based curriculum working with coaches and their athletic teams to reduce teen dating violence and increase safe intervention by their peers.

We have also joined with many community-based organizations, foundations, advocacy organizations and government entities in efforts to enable all people access to a safe place to call home, including the Close To Home Colorado campaign.

The year 2017 will be the last in four decades of our work that has continually expanded and shifted to meet rising challenges. We evolved from taking victims secretly into the homes of neighborhood women to a dual-facility organization with a state-of-the-art emergency shelter and a nonresidential suite of offices staffed with experienced trauma-informed advocates. As we move forward to build and expand our core services, I encourage you to actively join with our community partners, allies, donors and the foundations who share our values to help us realize a vision of safe homes for everyone and a compassionate and healthy community.

Yours in Peace & Justice,
Jackie

2016 SPOTLIGHT

During 2016, Safe Shelter continued to expand its role as a vehicle for raising awareness about the impact and challenges of DV and emerging interventions for the treatment of survivors.

2016 SYMPOSIUM ON DOMESTIC VIOLENCE: NAVIGATING THE POWER OF TECHNOLOGY



Launched with a free bilingual evening endorsed by St. Vrain Valley Schools with 60 youth, parents, and educators in attendance, the event was facilitated by two dynamic presenters to examine the positive and negative features of technology. Topics included teen dating; digital risks and vulnerabilities; relationship responsibilities, safety, how to avoid unintended harms; and how to contribute to a positive online culture.

The following day was introduced with a Keynote by District Attorney Stan Garnett and featured concurrent sessions designed for advocates and service providers; law officers; legal professionals; administrators and directors; and educators. Presentations explored the complexities of tech safety, safety planning, leveraging technology for protections, offender apprehensions and the dissection of successful legal cases.

Results of feedback for professional attendees:

96%: I now have a better understanding of the topic

87%: I will use what I learned to enhance my work

“ I had my eyes opened to some issues I would not have imagined. Also gave me some good talking points with clients. ”

RED FLAG CAMPAIGN

In recognition of Teen Dating Violence Awareness Month in February, Safe Shelter sponsored its first Red Flag Campaign working with TERA youth to install 2,900 red flags and outdoor awareness posters. The display stood for two weeks adjacent to the Longmont Youth Center. This number of flags represents the one-in-three students within the St. Vrain Valley Schools who are estimated to be affected by dating abuse this year. The Red Flag Campaign is a national project designed to encourage people to speak up when they see red flags in their friends' relationships.



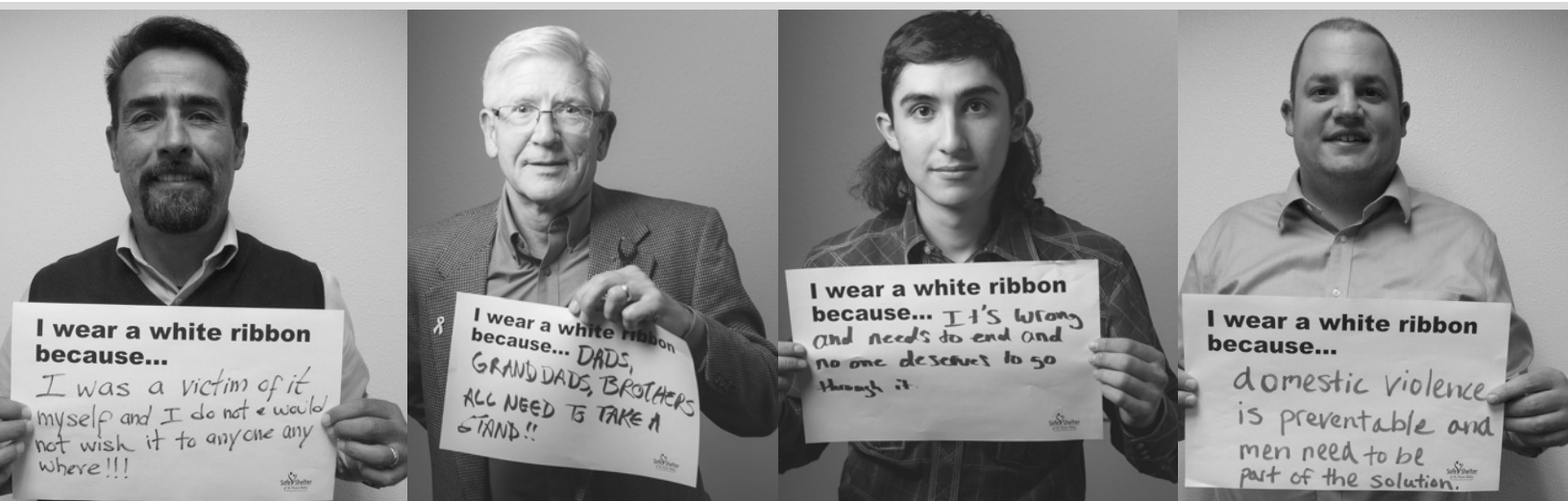
“For the last three years I have been involved in a very controlling and verbally abusive relationship. It escalated to where his final attack ended with me in the hospital for three days. I would think that after having so much training in high school through TERA I would know better, but I guess that shows that domestic violence truly can happen to anyone.”



2016 LEGACY DINNER: LAUNCHING THE WHITE RIBBON CAMPAIGN



In October 2016, Safe Shelter presented a special evening of performance art and call to action that launched its White Ribbon Campaign as part of its initiative to end violence against women and girls, promote gender equity, healthy relationships and a new vision of masculinity. The White Ribbon Campaign is the world's largest movement of men and boys working to end violence against women and girls.



OUR COMMUNITY IMPACT

We provided 4,299 nights for clients and their children in our emergency shelter.

“The kindness and love you have shown me and my son will stay with me forever.”

“After decades of working with professionals to address and implement “safe” in our home, it is finally with your care and skill that I am sure I now at last am getting a handle on what it is about-in real life. That I don’t stand alone to address the losses is a grace that you bring to your work. When I get too scared, I think of you.”

Provided 1,945 counseling session to survivors of relationship abuse.

Our advocates provided support on 2,618 crisis calls.

During 2016 our advocates
reached 865 community
members with our events.

Our legal advocates filed
200 restraining orders.

“ Thank you for the many occasions you have helped me on court processes, counseling sessions and more. I want you to know how forever grateful I am for all your kindness, support with immense gratification. All of you at Safe Shelter are an amazing team; a family of directional support. ”

Our Prevention Education reached 1,909
students in St Vrain Valley Schools
through 83 TERA presentations.

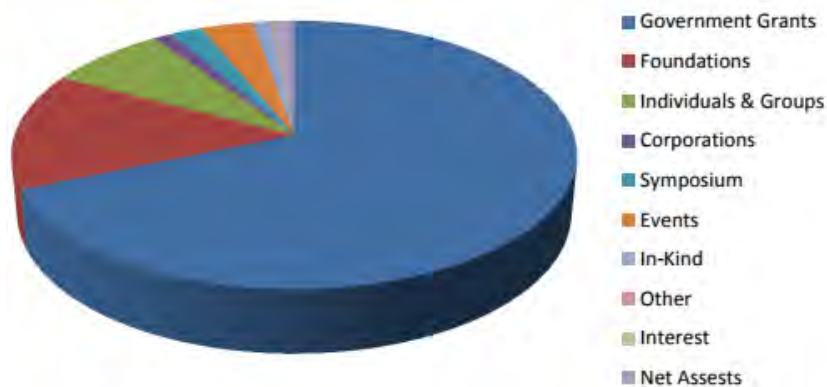
We trained 56 volunteers,
who donated 2,189 hours to help Safe
Shelter and the clients we serve.

2016 FINANCIALS

REVENUES

Government Grants	\$ 565,077	68.56%
Foundations	\$ 116,013	14.08%
Individuals & Groups	\$ 64,639	.84%
Corporations	\$ 10,000	1.21%
Symposium	\$ 17,262	2.09%
Events	\$ 28,342	3.44%
In-Kind	\$ 10,166	1.23%
Other	\$ 1,071	0.13%
Interest	\$725	0.09%
Net Assests	\$10,890	1.32%

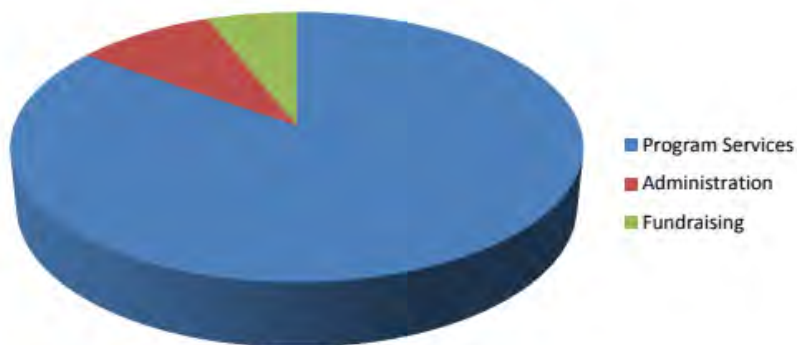
Total Assests \$824,185.00



EXPENSES

Program Services	\$ 674,166	84.90%
Administration	\$ 72,616	9.15%
Fundraising	\$ 47,266	5.95%

Total Expenses \$794,048.00



HOW YOU CAN SUPPORT SAFE SHELTER'S SERVICES

Monthly Giving

Become a sustaining donor of Safe Shelter by breaking up a larger donation into easy, affordable increments of \$20 or \$25 or more a month. Monthly income offers us a reliable source of revenue and helps families in crisis stabilize their lives and strive toward a self-sufficient future.

“The service you provide is unparalleled. It makes my heart warm and fills my eyes with tears of joy. Among the negatives and positives of our world, you are in the positive side for providing much needed help. - A Donor”

Corporate Giving

If you own your business, Safe Shelter will work with your company to find the right partnership for your philanthropic goals. If you work for a business, find out if you can increase the impact of your gift through a donation match program.

“It was an honor to be the recipient of the award for our organization at your most recent event and although we have partnered with you for years, it was so moving to learn more about your organization! - A Business Partner”

IN MEMORY OF...

“Please accept this donation in memory of Dana Jo Pechin. Her life was cut short on December 10, 2006 at the hands of her live-in boyfriend. The work you do in our community is crucial and important. My family thanks you for your commitment to women and children.”

FINANCIAL CONTRIBUTORS

Business/Corporations

Colorado Materials, Inc.
Johnston Chiropractic
Specialty Autobody
Nutek Americas Inc.
Medtronic
Micron Technologies, Inc.
Action Counseling
Qualcomm
Left Hand Brewing Co.
Cyhawk Hospitality
Richfield Homes
300 Suns Brewing
Ahlberg Funeral Chapel, Inc.

Event Sponsors

High Plains Bank
Colorado Materials
Ziggis's Coffee
CGI
Dynamic Designs
Inn Between
UC Health
Lucky's Market Longmont
Sugarbeet
Sun Rose Cafe
Sam's Club
Loveland Laser Tag Fun
Center
I Love Kickboxing
Club Pilates
New Leaf Chiropractic and
Family Wellness

Major Donors

(\$400.00 and over)

Frank & Gayle Rainey
Jack & Evelyn Kelly
Lisa Kusin
Gene Wells & Deborah
Valentine
Randall DeFauw
John & Barbara Wolfe
Dawn Stacy
Samuel Cardonsky
Dr. John & Lona Rae Hinman
Anthony & Mary Pat
Formosa
Amanda Billow
Brad Bickell
Chris McVay
Deanna Riley
Ellen Ross
Greg Richards
Hal Morrison
Jim Green
JP Butler
Mairi McKeever & Charles
Lewkowitz
Meighan Kerr
Phyllis Dwyer
Ralph Stilson Jr.
Samuel Cardonsky
Billow Family
Susan Morrison
Tim Formosa
Henry Braly & Toni Pickett

Civic Groups

Interfaith Quilters
Longmont Rotary Club
Kiwanis Club of Longmont

Faith Communities

First Baptist Church
Longs Peak United Methodist Church
St. Francis of Assisi Catholic Church
Messiah Lutheran Church & School
St Stephen's Episcopal Church
UMW of Hygiene
First Congregational - United Church
of Christ
St John's Catholic Church

Donor Advised Funds

Ertl Gift Fund
Entrepreneurs Foundation of CO
Eberspachwe Family Fund
Leo F & Ina M Wellborn Family
Fund
HM Family Fund
Jeff Sands Memorial Blue Skies Fund
Benedict Family Foundation

Private Foundation Grants

AAUW
A.V. Hunter Trust
Boulder County Bar Association
The Denver Foundation
Lynn & Helen Clark Fund
American Express Foundation
The April Fund
The Community Foundation Bld Cnty
The Open Door Fund
Colorado Bar Association
Verizon Hopeline
Virginia W. Hill Foundation
Wells Fargo Foundation

P.O. BOX 231 | Longmont, CO 80502 | Office: 303.772.0432
24/7 Crisis Line: 303.772.4422 | TERA textline: 720.340.8372
www.safeshelterofstvrain.org | info@safeshelterofstvrain.org

